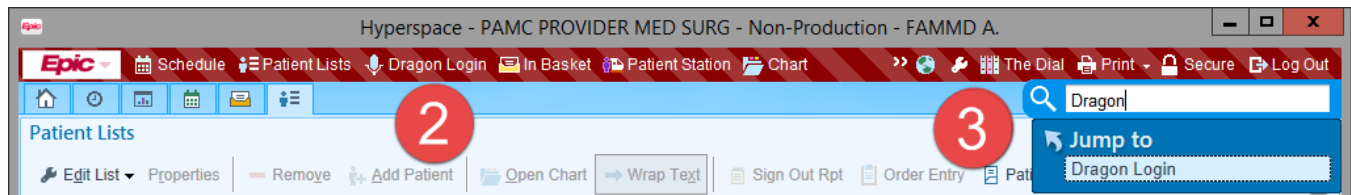


Dragon Medical One - PowerMic Mobile

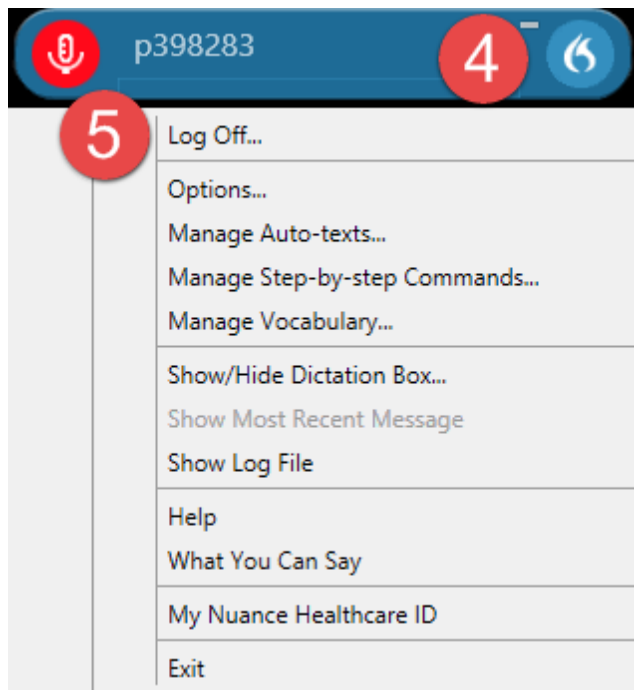
PowerMic Mobile (PMM) allows you to use your smartphone as a secure wireless microphone when dictating into Dragon Medical One (DMO). This document explains how to launch DMO with PMM as the dictation device, demonstrate the configuration required to download the PMM app to your smartphone, and link it to your Dragon account. Also included are brief instructions for using PowerMic Mobile.

Launch DMO with PowerMic Mobile as the Dictation Device

1. Login to Epic.
2. Open DMO by clicking the **Dragon Logon** icon in your Epic toolbar.
3. Or, search for Dragon and **"Jump to"** Dragon.



4. To select PowerMic Mobile as your dictation device, click the flame icon in the Dragon toolbar.
5. **Log Off** to open the Dragon launch screen.



6. Click the down arrow next to the Microphone field and select **Nuance PowerMic Mobile**.
7. Click the OK button.



8. Confirm that you have the orange smartphone icon on the left side of your Dragon bar.



Configure PowerMic Mobile

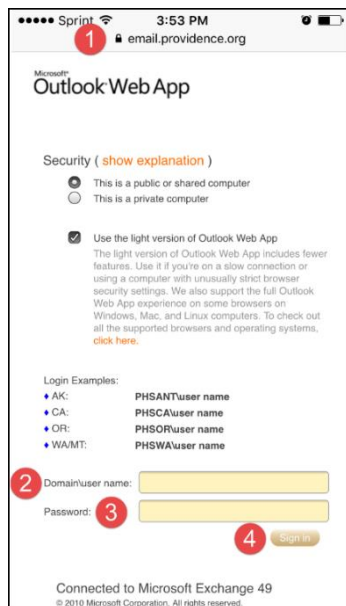
Once you have logged into Dragon Medical One:

- Contact your local CIS Credentialed Dragon Team. CIS will send you the Welcome Kit email described below.
- If your local CIS team cannot send the email, they will submit a ticket to the Dragon Analyst Team (IS Faxing & Dictation Apps) requesting assistance.
- In either case, your request must include the email address for emails received on your smartphone. The smartphone must be Android or iPhone.

You will receive a Welcome Kit email with instructions on downloading and configuring the PMM application. Below is an example showing the content of the email, with some additional explanatory text and graphics.

Download the PowerMic Mobile App on your Smartphone

1. Open a web browser on your phone and go to email.providence.org to access your Welcome Kit.
2. Enter your Domain\user name (i.e., Epic Credentials).
3. Enter your Password.
4. Sign in.



5. Open your Welcome Kit email (pictured below) on your smartphone. Click the appropriate link.

*****Important: Read and open this email from your SmartPhone Device*****

Download PowerMic Mobile on your SmartPhone

Click the link below from your smartphone to download the mobile application. If you have previously downloaded the application, you can skip this step

- **iOS (iphone):** [Click here to download the iOS app](#)
- **Android:** [Click here to download the Android app](#)

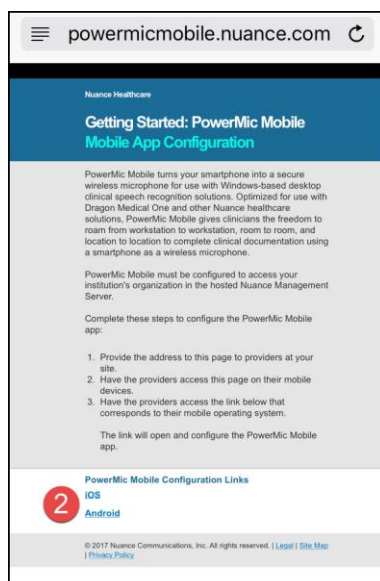
Pair your smartphone with Dragon Medical One (DMO)

1. Open the appropriate link on your smartphone, found in the Welcome Kit email.

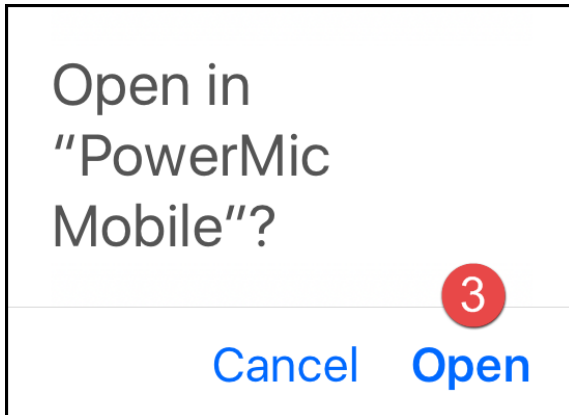
Caregivers, click the following link:

<http://powermicmobile.nuance.com/PowerMicMobile/E373B686-5739-4D4B-AD55-684849AA14B0/index.html>

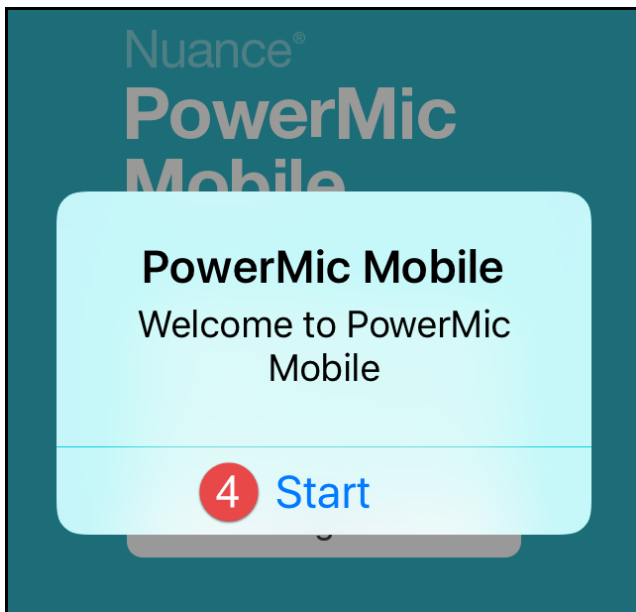
2. The Nuance configuration page opens. Select your **smartphone operating system**.



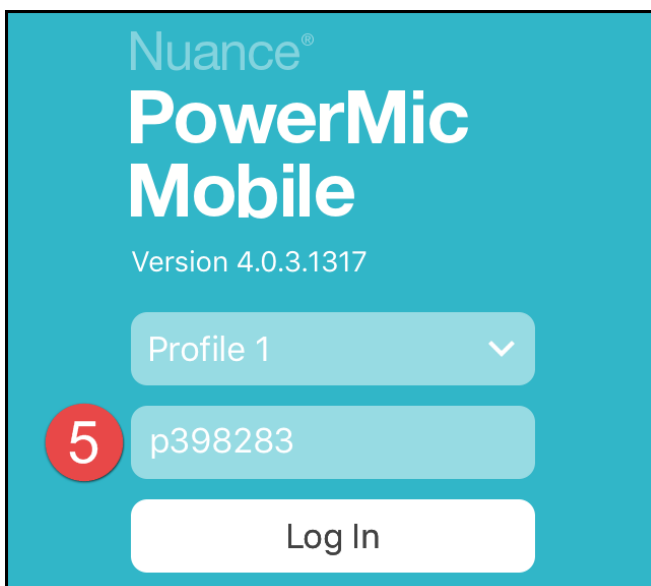
3. If the below prompt appears, click **Open**.



4. Click **Start**.



5. If prompted, enter your **DMO username**, this is the same as your Epic login.

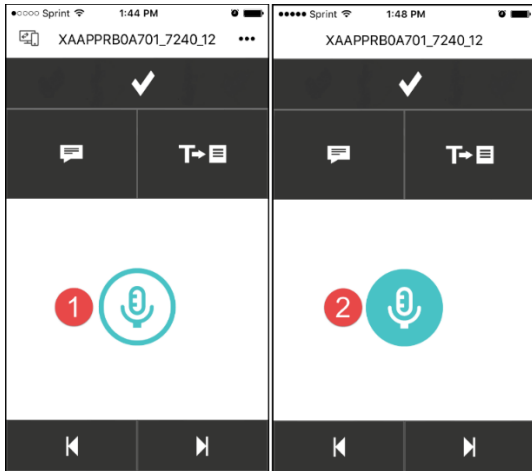


6. Your Dragon bar will now have a red phone icon on the left, indicating a successful PowerMic Mobile pairing session.



Use PowerMic Mobile

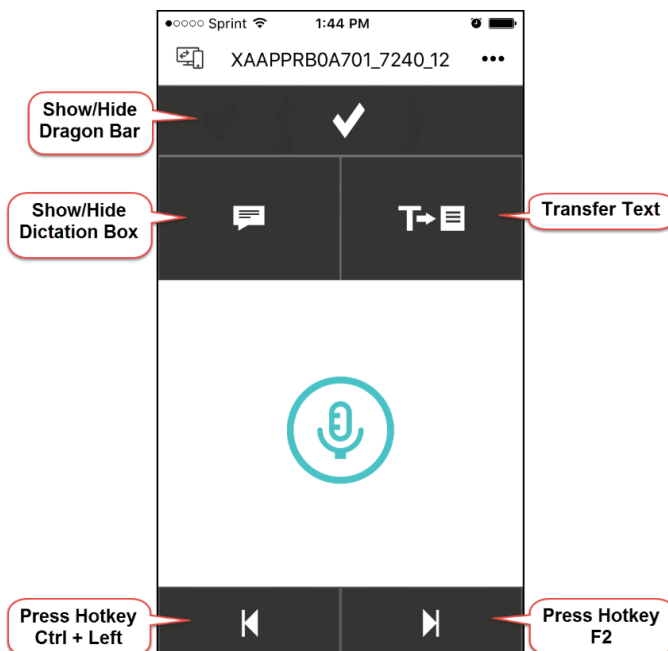
1. Tap the microphone icon once to start dictating.
2. The microphone icon fills in with teal to indicate that it's active. Tap the microphone icon again to turn it off.



3. The green phone icon in the Dragon bar, is also an indication of an active microphone.



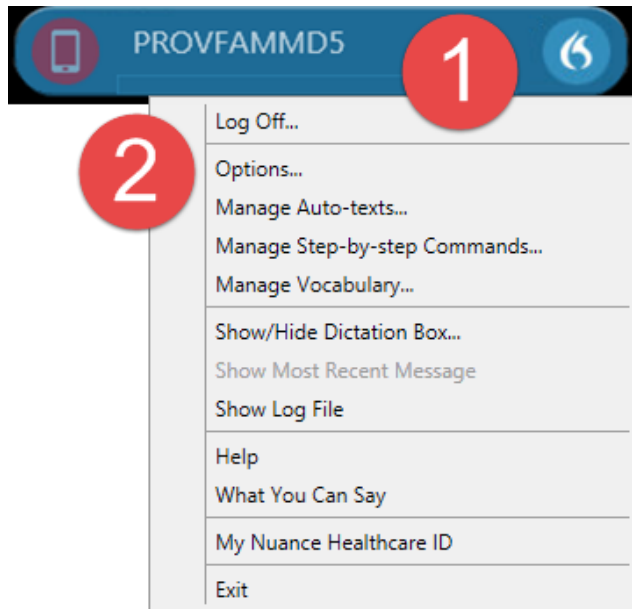
4. The "buttons" on the PowerMic Mobile screen are similar to the button assignments on the wired PowerMic. Default button assignments are shown below.



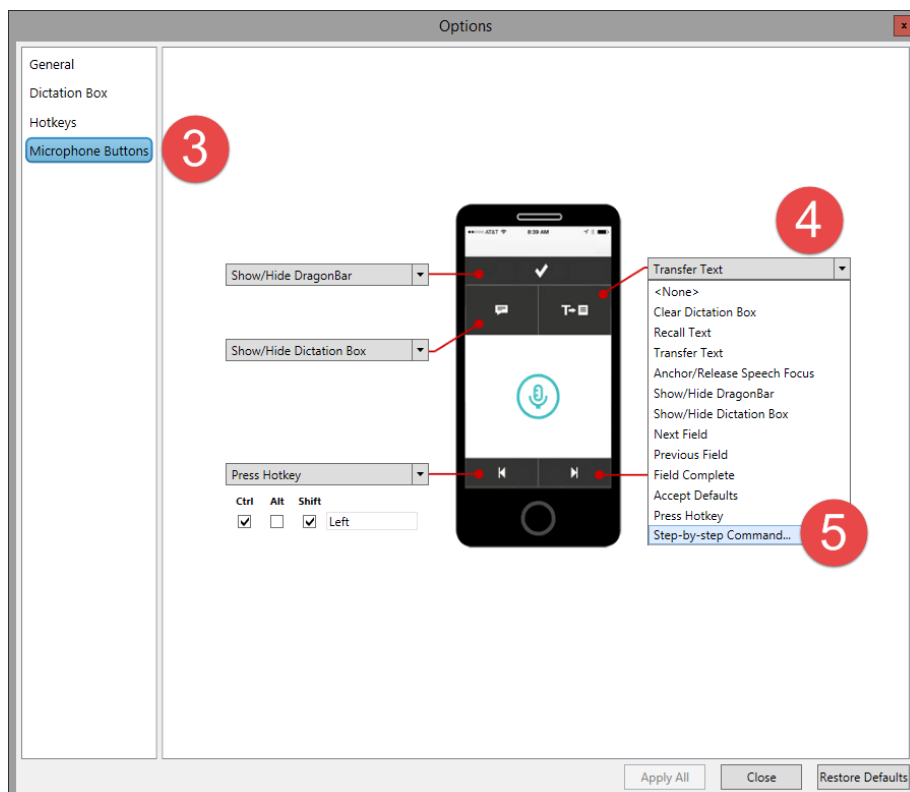
Customize PowerMic Mobile buttons

This example will demonstrate how to assign a user created Step-by-step Command to the PMM button, currently assigned by default to Transfer Text.

1. Select the flame icon in the Dragon toolbar.
2. Select **Options**.

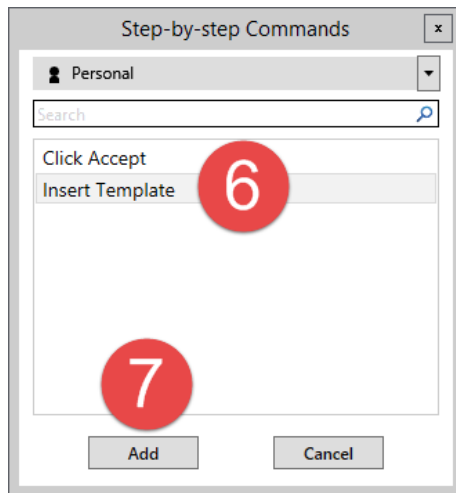


3. The Options window appears, select **Microphone Buttons**.
4. Click the **down arrow** next to the button you wish to reassign.
5. Select **Step-by-step Commands**.



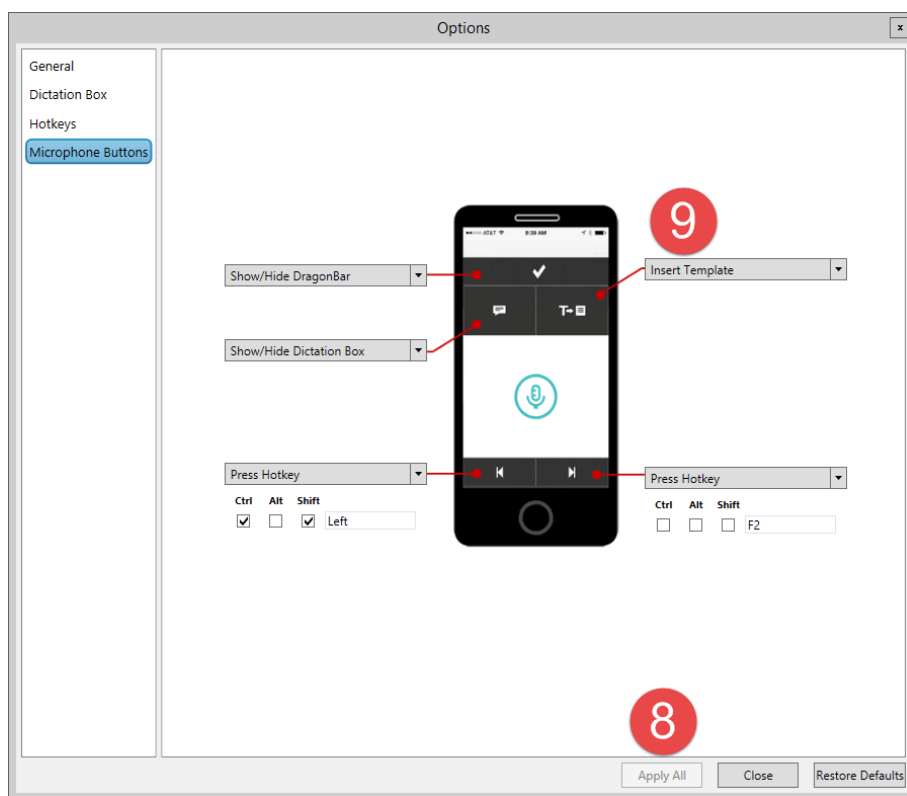
6. Select the command

7. Click **Add**



8. Click **Apply All**.

9. The user created Insert Template Step-by-step Command is now assigned to the Transfer text button.



Log Out of PowerMic Mobile

Close the PMM app on your smartphone to log out. The next time you open DMO, PMM will be the default selection in the Microphone field on the log in screen. You can change the microphone choice before logging in if desired.